

Health Data and How It Shapes Our Work

Presented by:

Alberto Espinoza, Evaluation Specialist

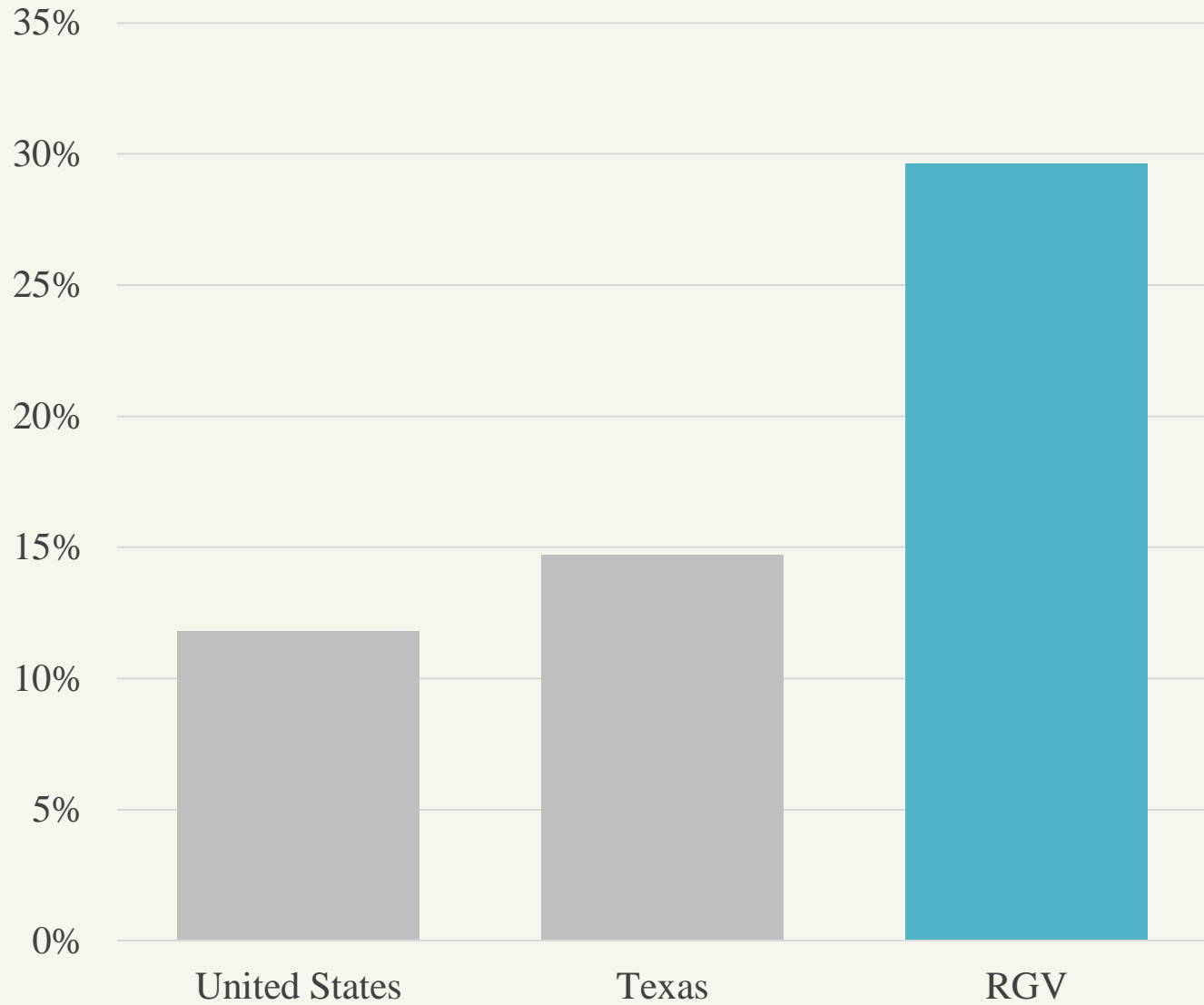
In 2018 **1 out of 5**
residents were
over the age of 60



By 2050 **1 out of 3**
residents will be
over the age of 60



Source: Texas Demographic Center, 2018 Population Projections

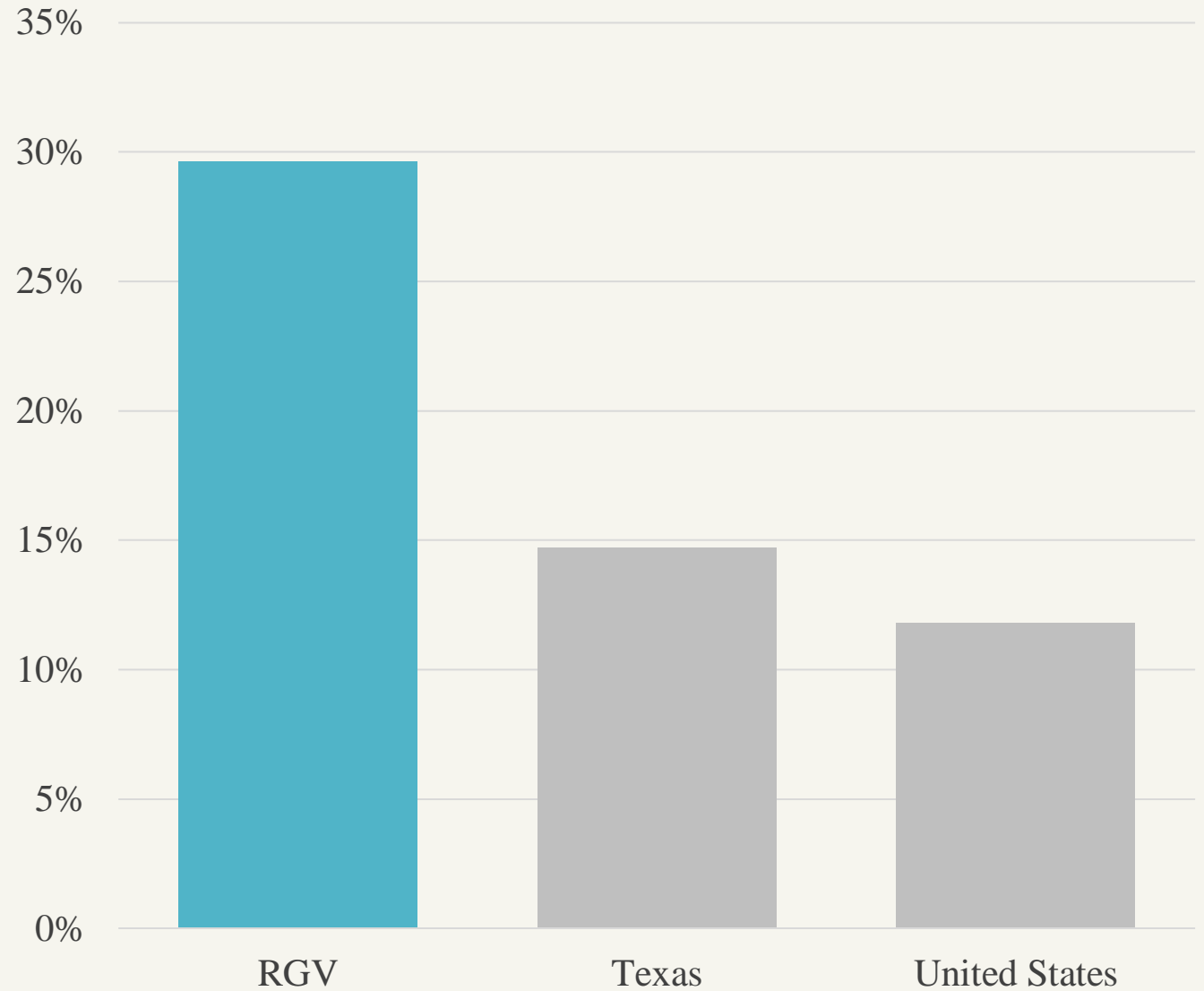


30%

of RGV
residents live
at or below the
poverty level

30%

of RGV
residents have
no health
insurance





60%

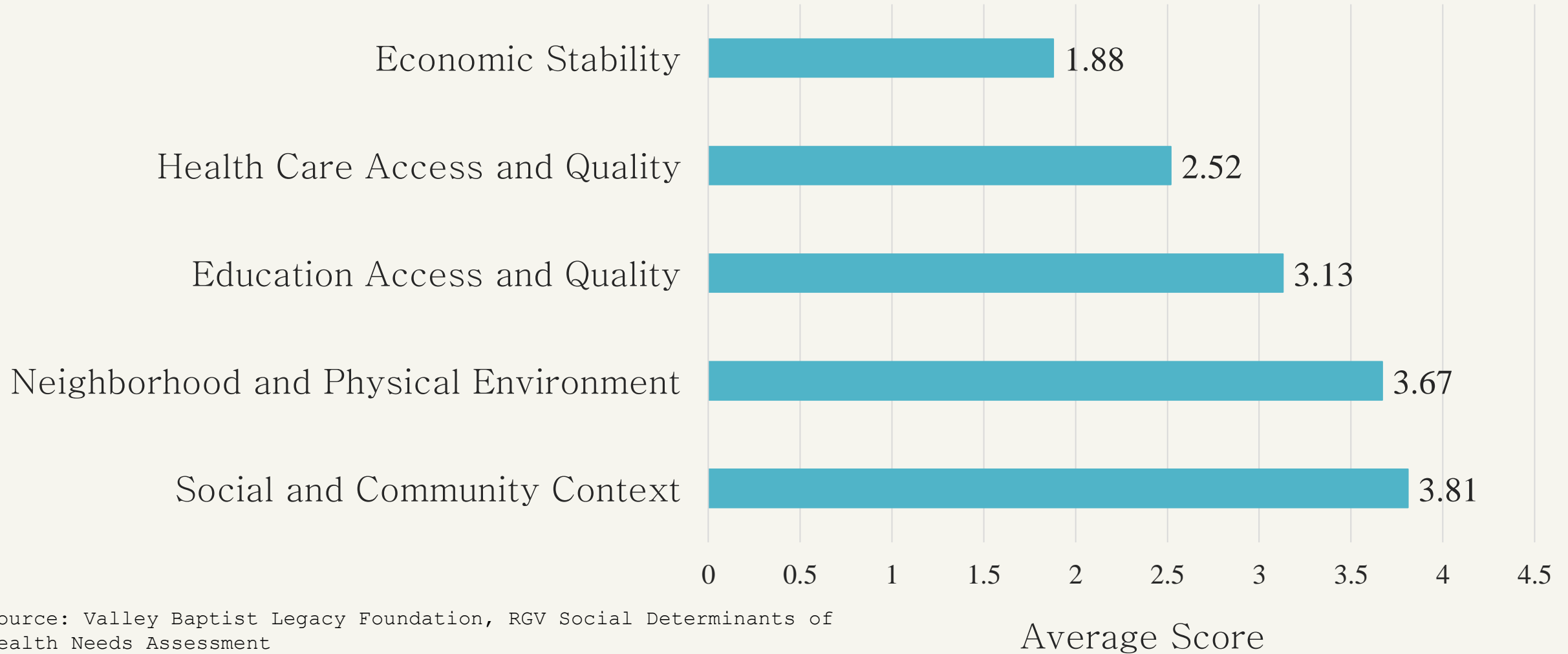
of residents have an educational attainment at or below the high school diploma level (or equivalent)

20%

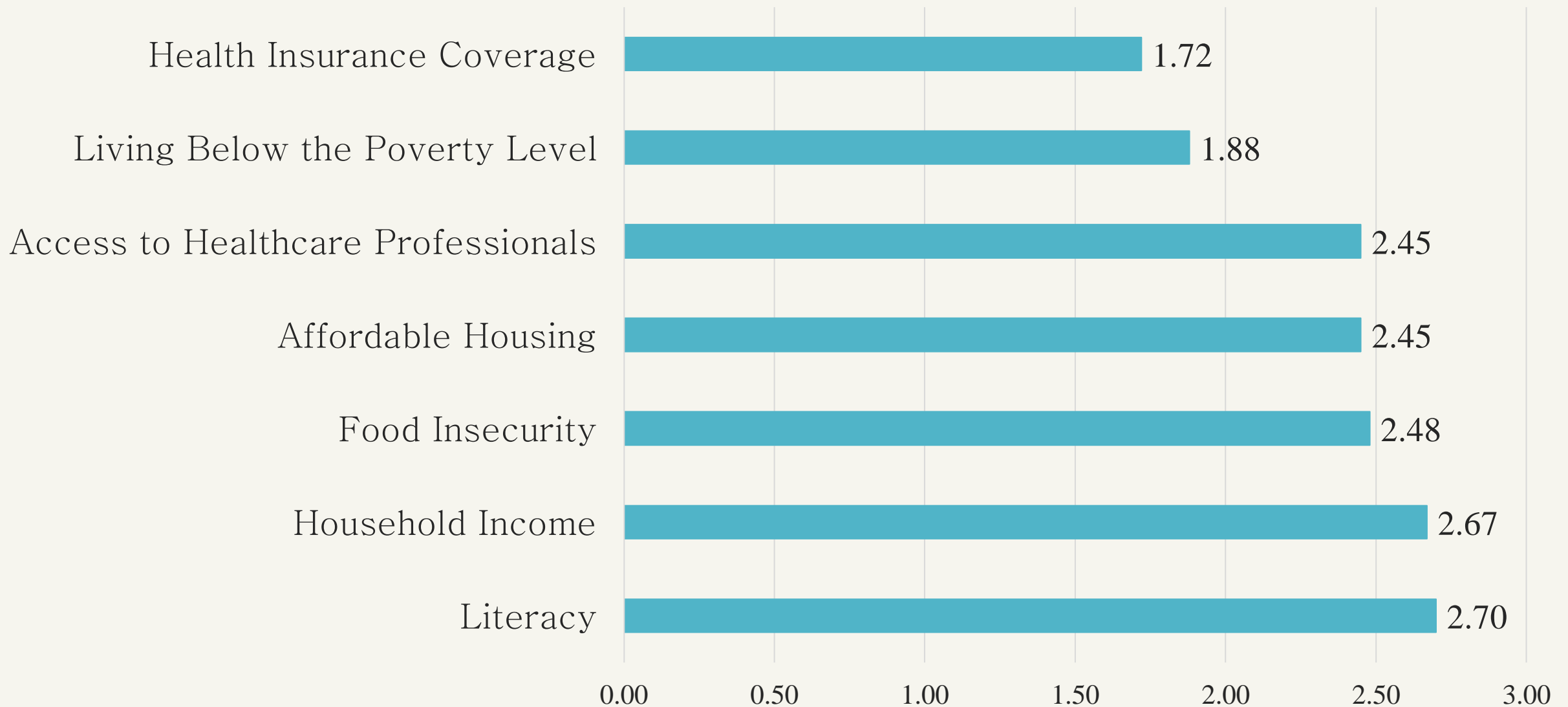
are food
insecure



Please rank each social determinant in order of their impact on an individual's health and health outcomes, with 1 having the most impact and 5 having the least impact.



Top 7 Social Determinant of Health Indicators



Source: Valley Baptist Legacy Foundation, RGV Social Determinants of Health Needs Assessment

Average Score

\$141M

awarded since 2014

160+

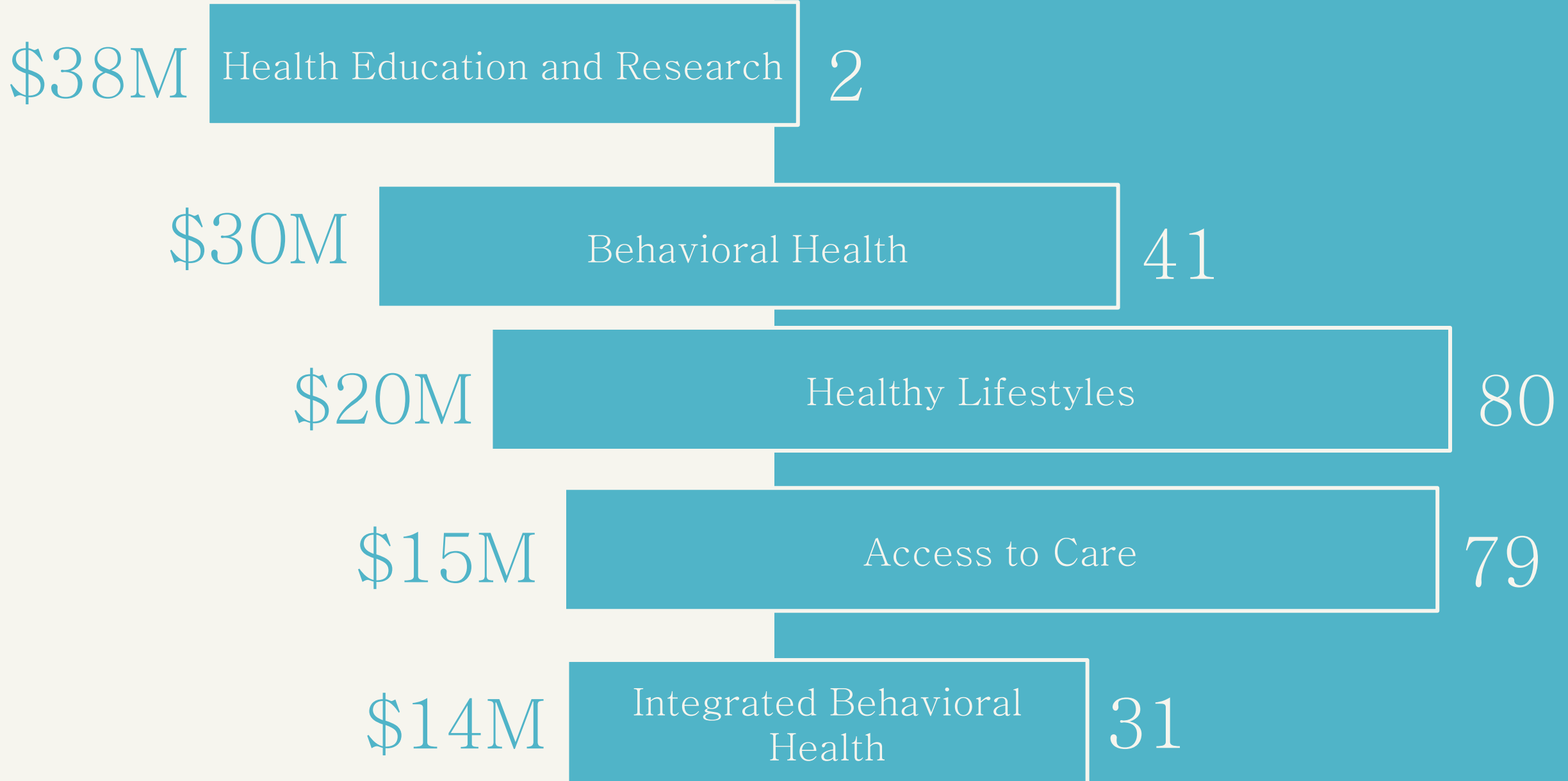
funded organizations

430

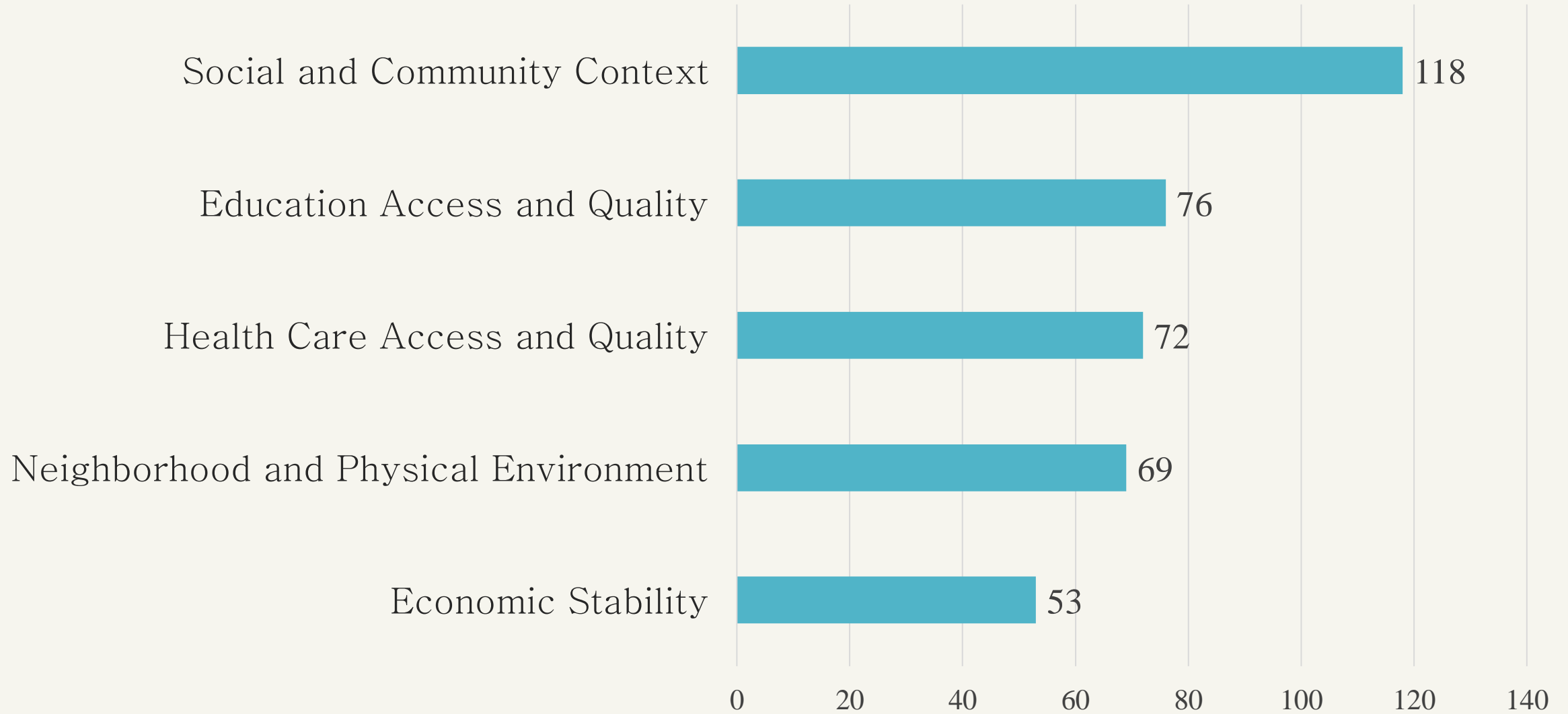
approved grants

Amount Awarded

Number of Grants



Number of Organizations Addressing Social Determinant



What does this mean?

- Clear need around social determinants in the RGV
- Organizations increasingly focused on prevention efforts rather than just disease management
- We are learning how to measure grant outcomes with a focus on social determinants
- We will be more intentional about defining grant outcomes for each of the grants we fund
- Provide guidance to grantees on developing or refining SMART outcomes
- Work closely with grantees to center monitoring, evaluation, and learning
- Keep learning about needs in our community and identifying opportunities to address those needs